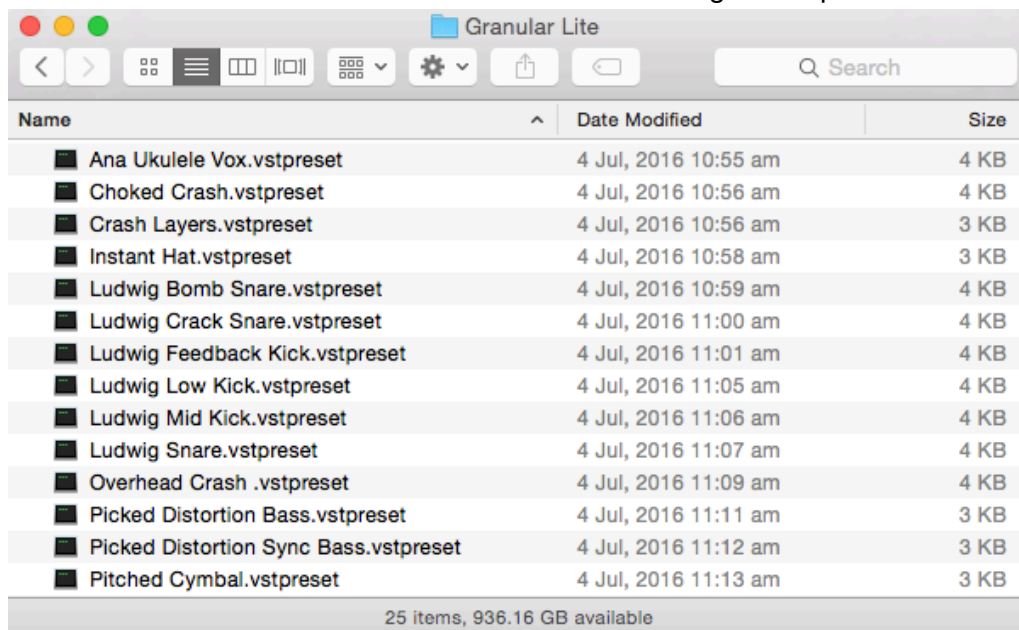


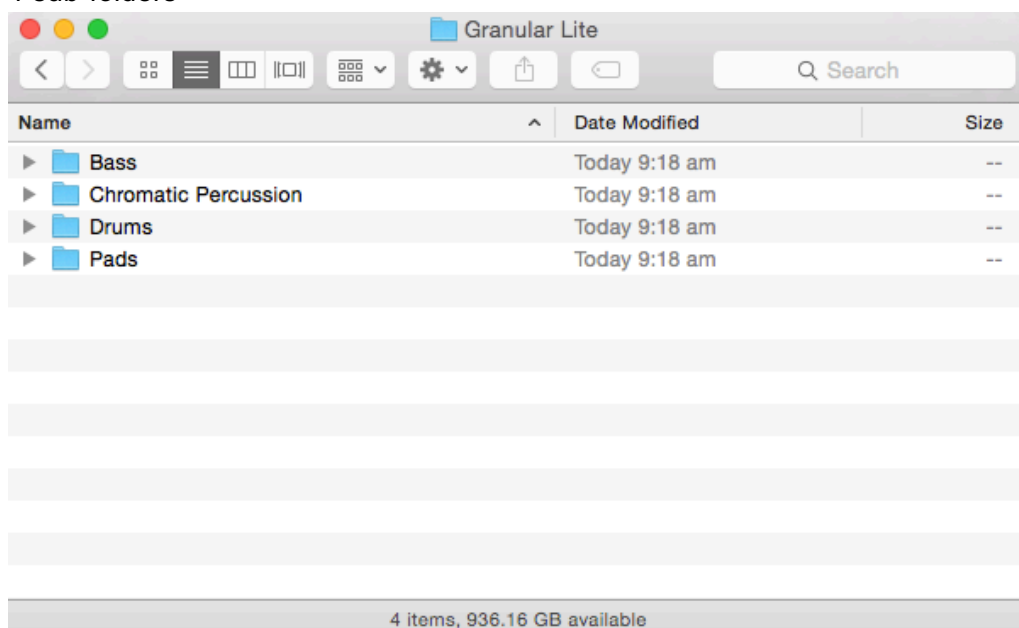
“Granular Lite” Installation

1. Download and unzip the file “OMF_Lite.zip”
2. Save all the contents of the folder “OMF_Lite” in your system, Mac or Windows
 - a. 25 VST Presets (saved under the VST preset folder: Presets/Granular Lite/)
 - b. 16 User Samples (saved under the user sample folder: User Samples/Granular Lite/)
 - c. Patch List (filename: GranularLite_PatchList.pdf)
 - d. Installation (filename: GranularLite_Installation.pdf)
 - e. License Agreement (filename: GranularLite_License_EndUserAgreement.pdf)
 - f. Readme (filename: GranularLite_Readme.pdf)
3. **(IMPORTANT) DO NOT** change the folder names, “Presets/Granular Lite/” and “User Samples/Granular Lite/”

a. Screenshot of “Presets/Granular Lite/” folder containing 25 .vstpreset



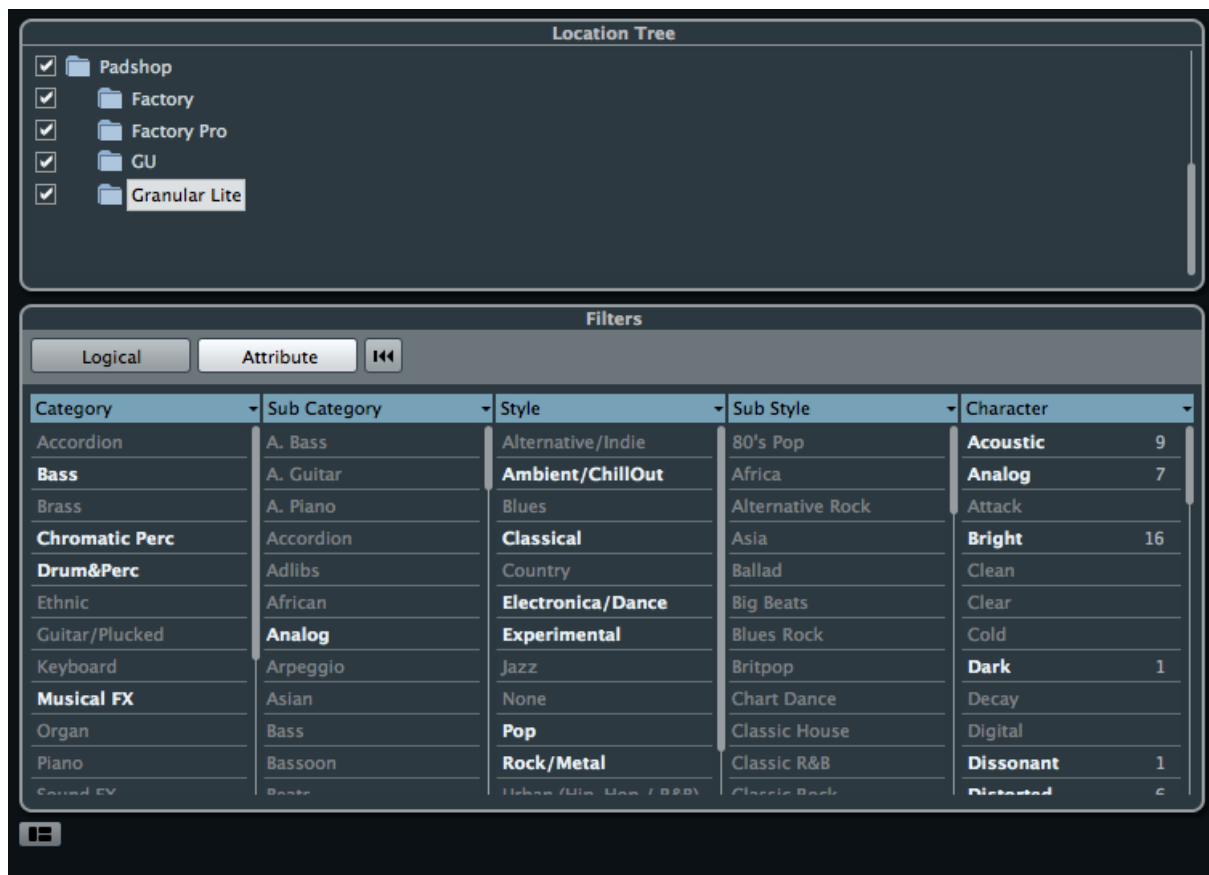
b. Screenshot of the “User Samples/Granular Lite/” User Samples that are saved under 4 sub-folders



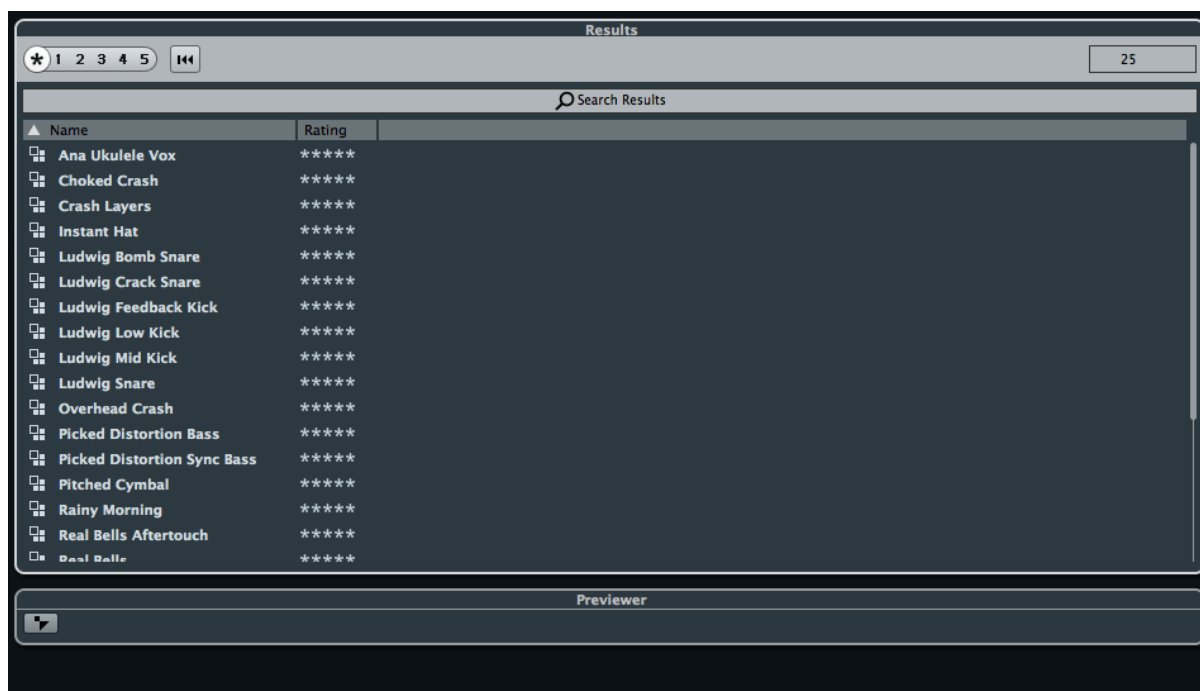
4. Move both “Granular Lite” folders to the locations below

	Mac	Windows
Preset Folder “Granular Lite” (25 files)	User/Library/Audio/Presets/Steinberg Media Technologies/Padshop/	C:\Users\[User Name]\My Documents\VST3 Presets\Steinberg Media Technologies\Padshop\
User Sample Folder “Granular Lite” (4 sub-folders containing 16 files)	User/Documents/Steinberg/Padshop/ Samples/User Samples/	C:\Users\[User Name]\My Documents\Steinberg\Padshop\Sa mples\User Samples\
	<i><u>Special notes to PadShop users</u></i> You may not be able to find this location in your system. Please first create the file directories before moving the “Granular Lite” folder there.	

5. Add an Instrument track - “PadShop” or “PadShop Pro”
6. Select “load presets” after the PadShop GUI opens
7. Tick the box next to “Granular Lite” in the “Location Tree” and the system will scan the folder once



8. After the scan, click the folder name “Granular Lite” and all the presets will be shown in the previewer (located at the right hand side)



9. This is how the user samples folder looks like after installing (PadShop Pro only)



10. PadShop users will not be able to see the samples in the PadShop GUI but it will not affect the usage once the presets are loaded.
11. For information, please go to our website www.onlinemusicfoundry.com.