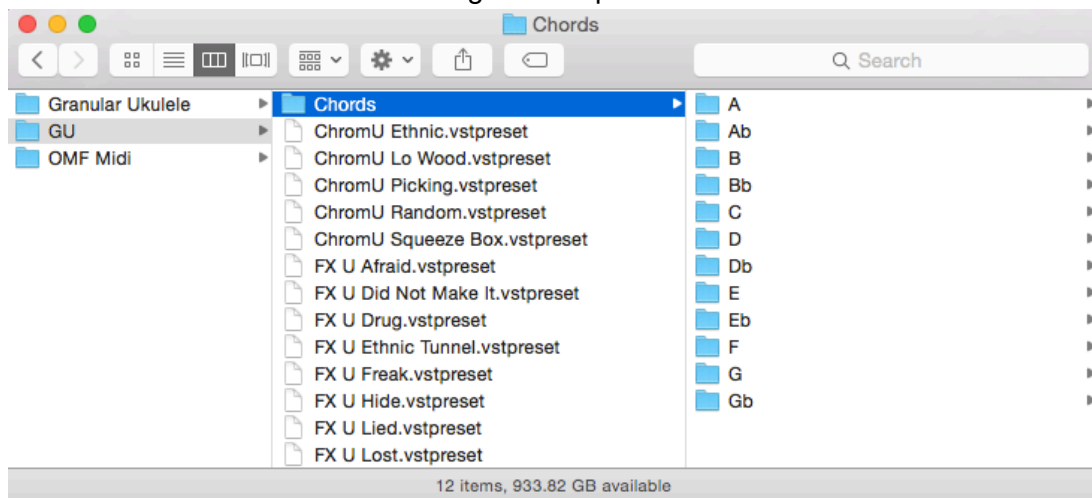


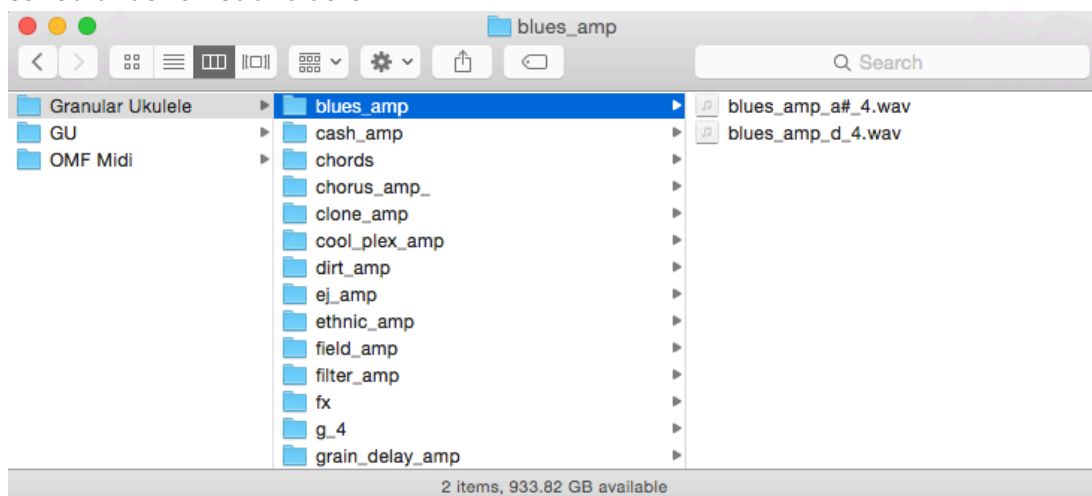
“Granular Ukulele” Installation

1. Download and unzip the file “OMF_GU.zip”
2. Save all the contents of the folder “OMF_GU” in your system, Mac or Windows
 - a. 325 VST Presets (folder name: GU)
 - b. 234 User Samples (folder name: Granular Ukulele)
 - c. 210 Midi Files (folder name: OMF Midi)
 - d. List of Midi Files (filename: GranularUkulele_MidiList.pdf)
 - e. Patch List (filename: GranularUkulele_PatchList.pdf)
 - f. Installation (filename: GranularUkulele_Installation.pdf)
 - g. License Agreement (filename: GranularUkulele_License_EndUserAgreement.pdf)
 - h. Readme (filename: GranularUkulele_Readme.pdf)
3. **(IMPORTANT) DO NOT** change the folder names, “GU”, “Granular Ukulele” and “OMF Midi”.

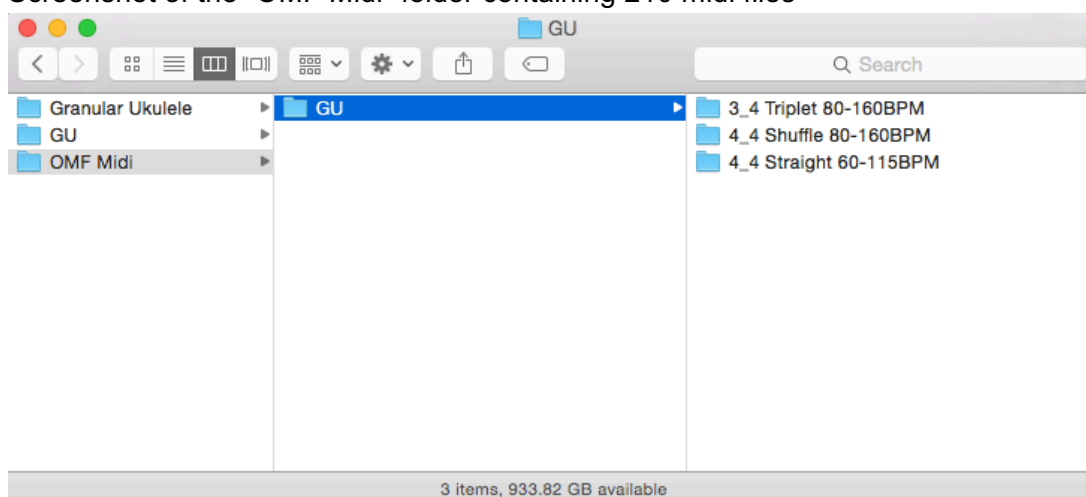
- a. Screenshot of “GU” folder containing 325 .vstpreset



- b. Screenshot of the “Granular Ukulele” folder containing 234 user samples that are saved under 34 sub-folders



c. Screenshot of the “OMF Midi” folder containing 210 midi files



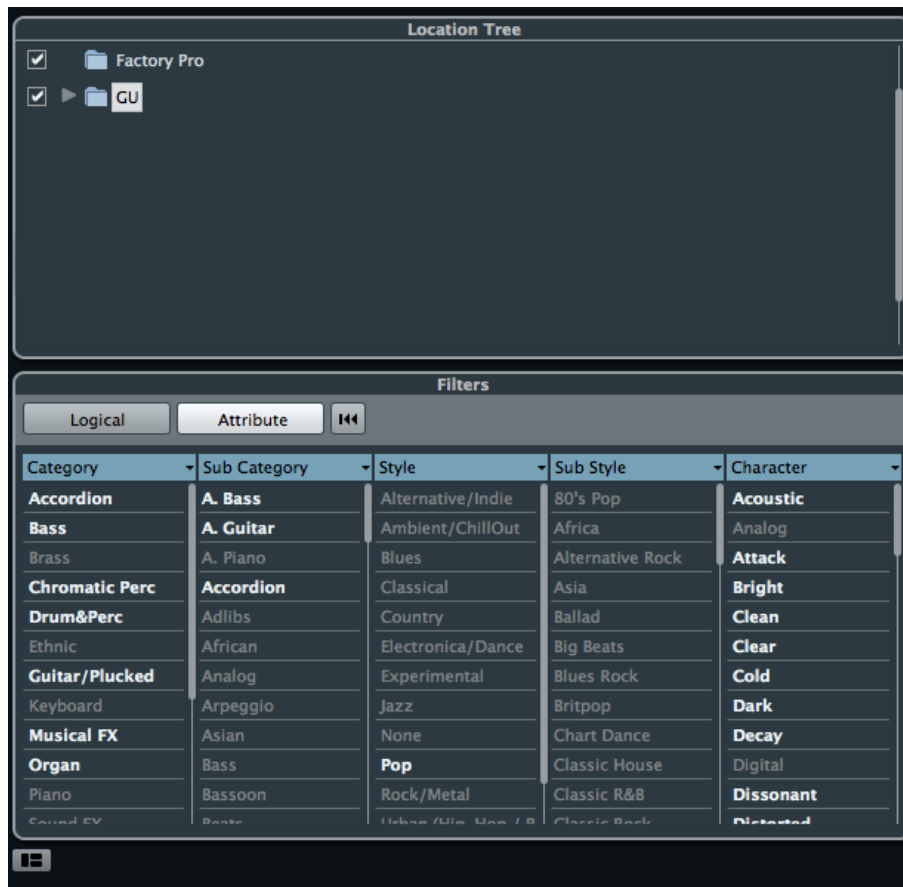
4. Move/Save the folders, “GU”, “Granular Ukulele” and “OMF Midi”, to the locations below

	Mac	Windows
VST Presets “GU” (325 files)	User/Library/Audio/Presets/Steinberg Media Technologies/Padshop/	C:\Users\[User Name]\My Documents\VST3 Presets\Steinberg Media Technologies\Padshop\
User Samples “Granular Ukulele” (234 files under 34 sub- folders)	User/Documents/Steinberg/Padshop/ Samples/User Samples/	C:\Users\[User Name]\My Documents\Steinberg\Padshop\Sa mples\User Samples\
	<u>Special notes to PadShop users</u> You may not be able to find this location in your system. Please first create the file directories before moving the “Granular Ukulele” folder there.	
Midi files “OMF MIDI” (210 files)	Anywhere in your hard disk will do. With the “Rescan” function in the “Sound Browser”, you should be able to locate the midi files easily.	

5. Add an Instrument track - “PadShop” or “PadShop Pro”

6. Select “load presets” after the PadShop GUI opens

7. Tick the box next to “GU” in the “Location Tree” and the system will scan the folder once



8. After the scan, click the folder name “GU” and all the presets will be shown in the previewer (located at the right hand side)



9. This is how the user samples folder looks like after installing (PadShop Pro only)

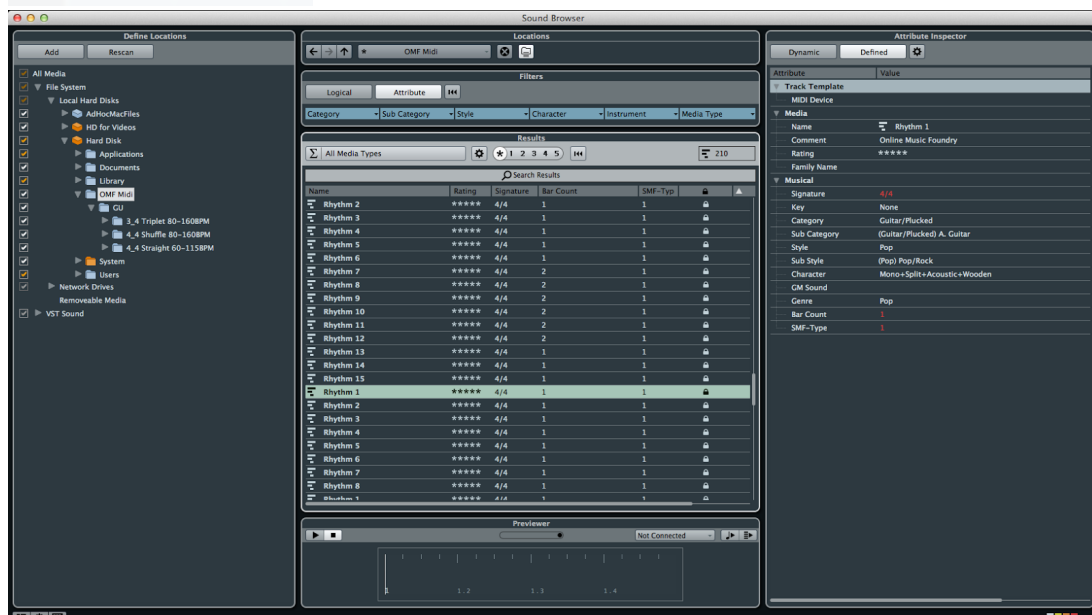
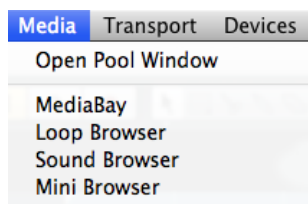


10. PadShop users will not be able to see the samples in the PadShop GUI but it will not affect the usage once the presets are loaded.

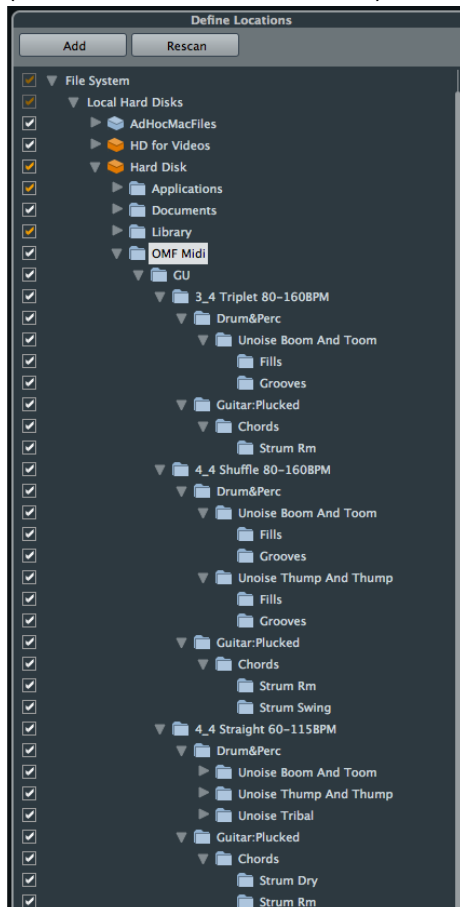
11. How to browse the midi files with the “Sound Browser”

- This is a guide on how to find the 210 midi files, that come with this product, after the “OMF Midi” folder is saved in your system. Please refer to Point 4 above for details.

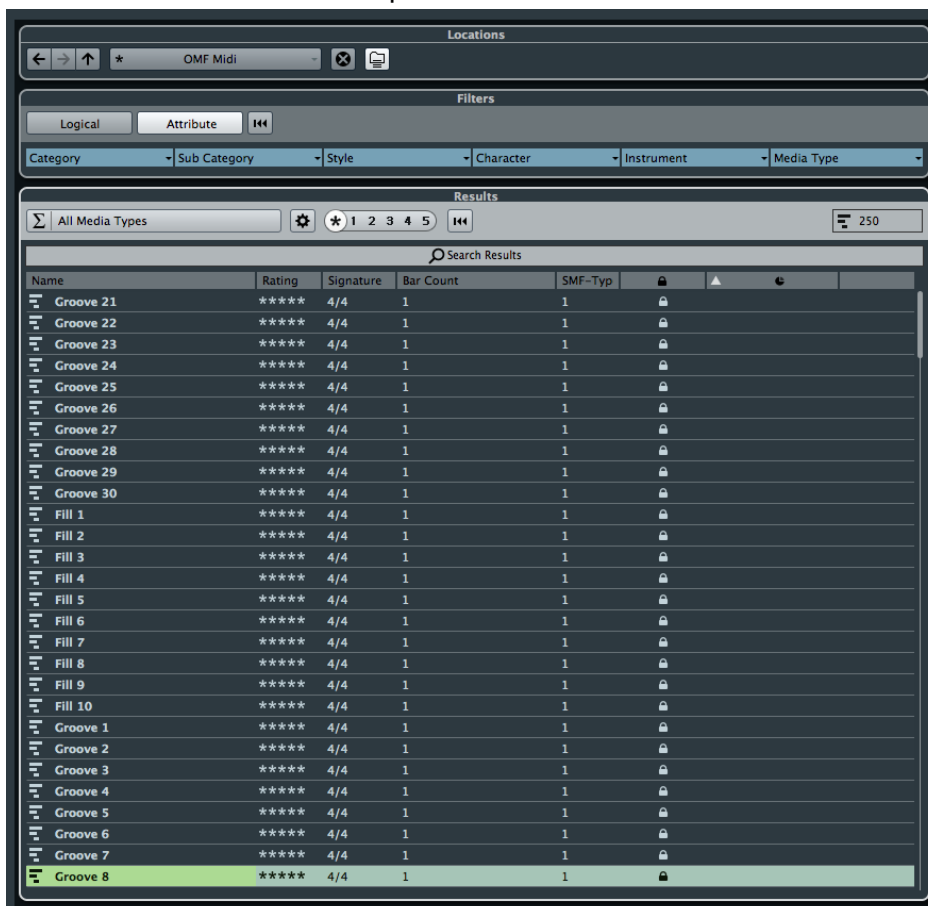
a. Go to the menu “Media” and select “Sound Browser”



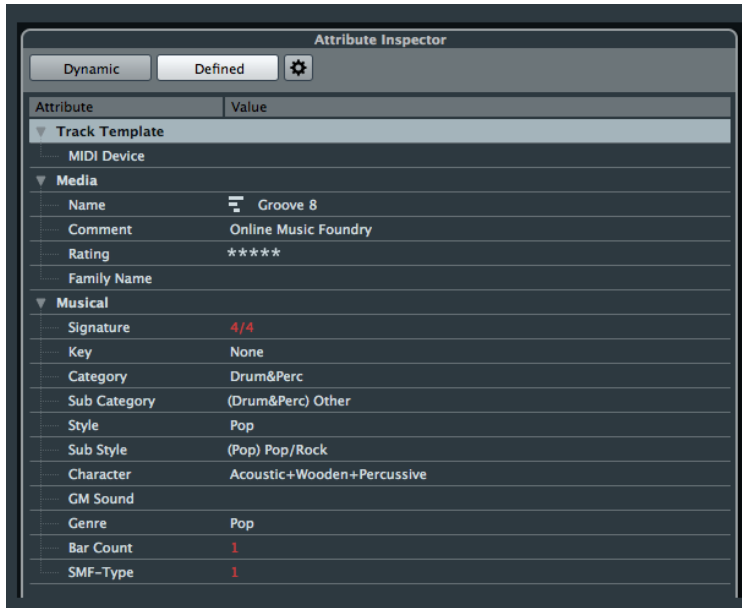
- b. Hit “Rescan” if the folder “OMF Midi” is not shown under the “Define Locations” (located at the left hand side)



- c. The midi files included in this product will be shown under “Locations”



- d. Tags of the midi files will be shown under “Attribute Inspector” (located at the right hand side)



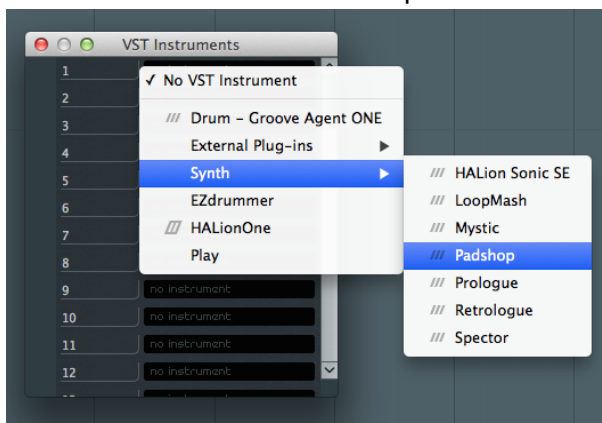
12. How to preview individual midi files with the “Sound Browser”

- Users are advised to follow all these steps.
- Preset “Strum Dry A” is used in this example.

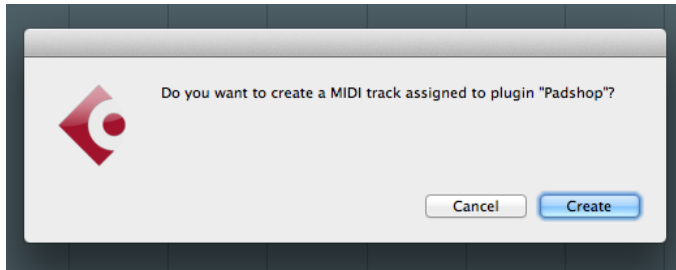
- a. Go to the menu “Devices” and select “VST Instruments”



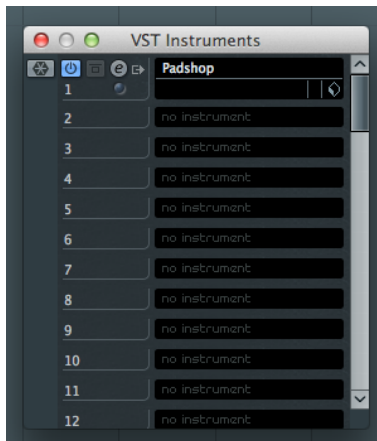
- b. Select one and insert “PadShop”



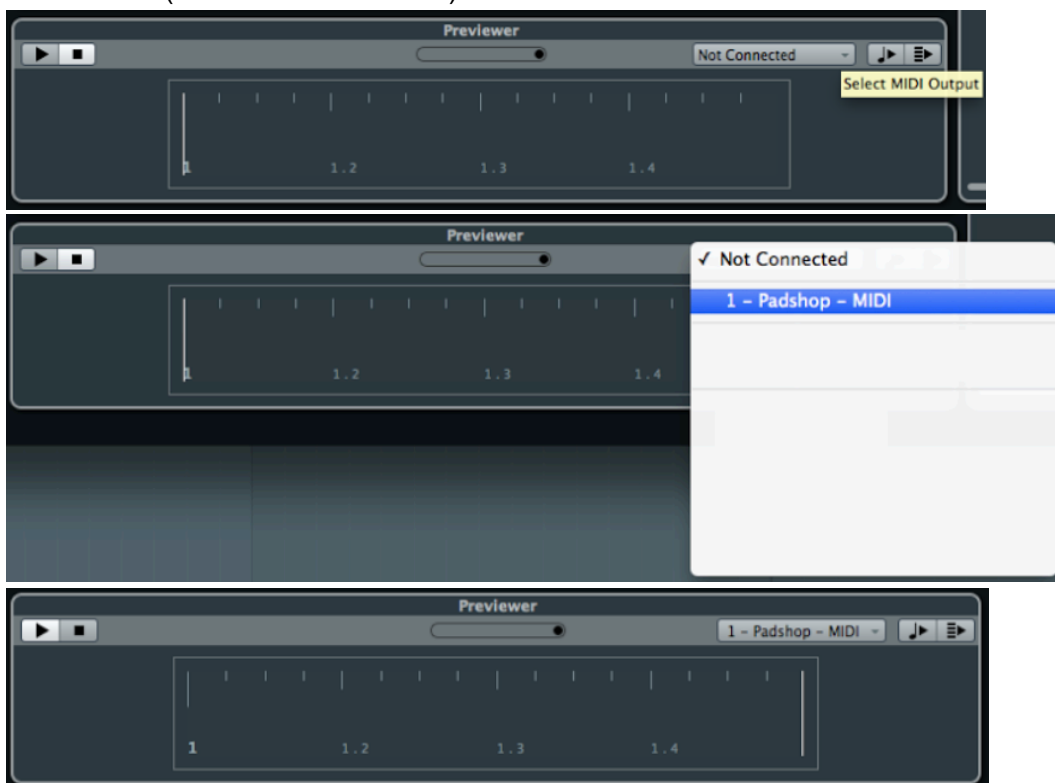
- c. Select [Create] to insert a midi track for PadShop



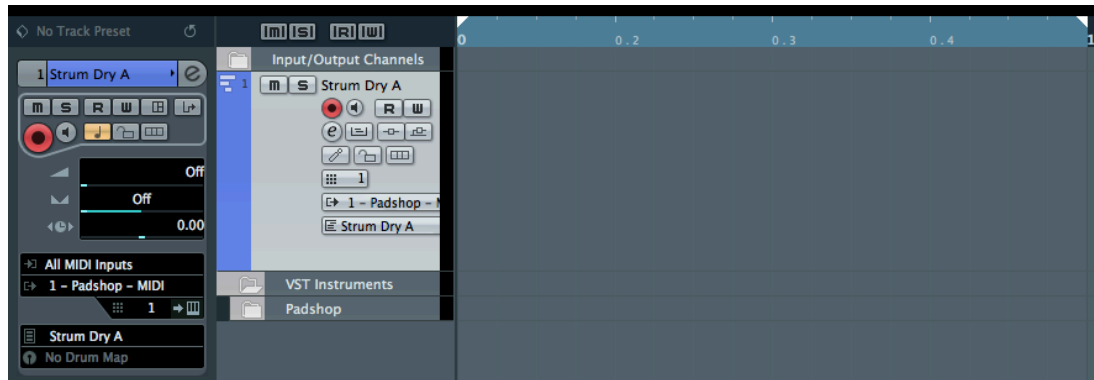
- d. This is how the “VST Instruments” window looks like after inserting the midi track for PadShop



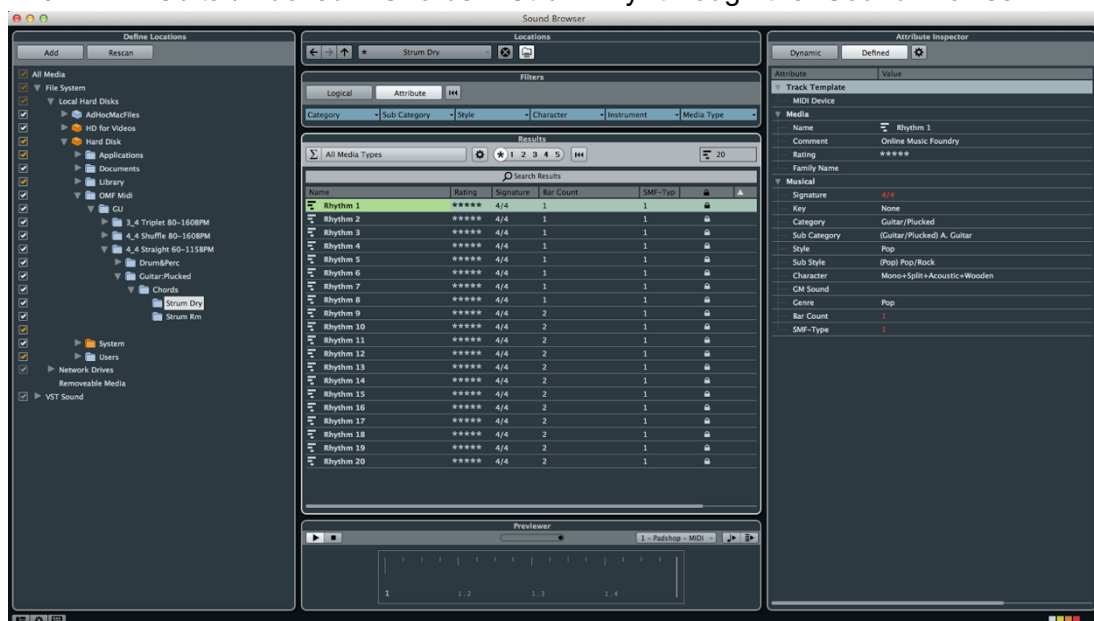
- e. Go back to the “Sound Browser” and select “MIDI Output” to “Padshop – MIDI” under “Previewer” (located at the bottom)



- f. Go back to the midi track for PadShop to load the preset “Strum Dry A” through the PadShop GUI

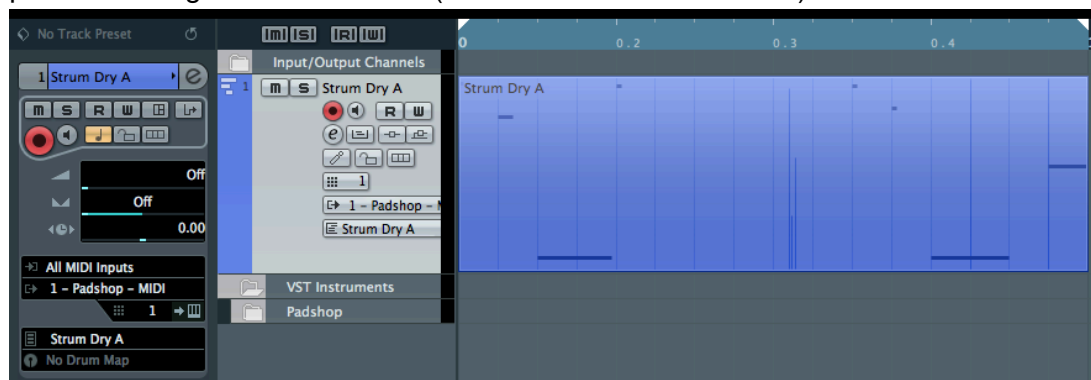


- g. Select the midi file “Rhythm 1” that is located at “OMF Midi > 4_4 Straight 60-115BPM > Guitar/Plucked > Chords > Strum Dry” through the “Sound Browser”



- h. Hit “Play” to preview this particular midi file through the “Previewer”

13. To insert midi files to the midi track for PadShop, simply drag and drop the midi files you preview through the “Previewer” (as stated in Point 12 above) from the “Sound Browser”



14. For more information, please go to our website www.onlinemusicfoundry.com.